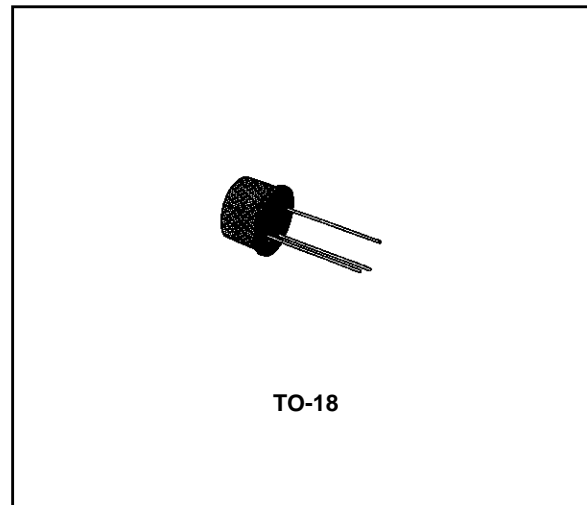


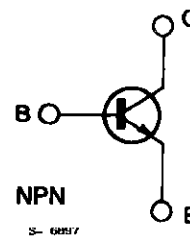
**HIGH-SPEED SATURATED SWITCHES**

**DESCRIPTION**

The BSX19 and BSX20 are silicon planar epitaxial NPN transistors in Jedec TO-18 metal case. They are primarily intended for very high speed saturated switching applications.



**INTERNAL SCHEMATIC DIAGRAM**



**ABSOLUTE MAXIMUM RATINGS**

Symbol	Parameter	Value	Unit
$V_{CBO}$	Collector-base Voltage ( $I_E = 0$ )	40	V
$V_{CES}$	Collector-emitter Voltage ( $V_{BE} = 0$ )	40	V
$V_{CEO}$	Collector-emitter Voltage ( $I_B = 0$ )	15	V
$V_{EBO}$	Emitter-base Voltage ( $I_C = 0$ )	4.5	V
$I_{CM}$	Collector Peak Current ( $t = 10 \mu s$ )	0.5	A
$P_{tot}$	Total Power Dissipation at $T_{amb} \leq 25 \text{ }^\circ\text{C}$ at $T_{case} \leq 25 \text{ }^\circ\text{C}$	0.36	W
		1.2	W
$T_{stg}, T_j$	Storage and Junction Temperature	- 65 to 200	$^\circ\text{C}$

## BSX19-BSX20

### THERMAL DATA

$R_{th\ j-case}$	Thermal Resistance Junction-case	Max	146	°C/W
$R_{th\ j-amb}$	Thermal Resistance Junction-ambient	Max	486	°C/W

### ELECTRICAL CHARACTERISTICS ( $T_{amb} = 25\text{ °C}$ unless otherwise specified)

Symbol	Parameter	Test Conditions	Min.	Typ.	Max.	Unit
$I_{CBO}$	Collector Cutoff Current ( $I_E = 0$ )	$V_{CB} = 20\text{ V}$			0.4	$\mu\text{A}$
		$V_{CB} = 20\text{ V}$ $T_{amb} = 150\text{ °C}$			30	$\mu\text{A}$
$I_{CES}$	Collector Cutoff Current ( $V_{BE} = 0$ )	$V_{CE} = 15\text{ V}$ $T_{amb} = 55\text{ °C}$			0.4	$\mu\text{A}$
		$V_{CE} = 40\text{ V}$			1	$\mu\text{A}$
$I_{CEX}$	Collector Cutoff Current ( $V_{BE} = -3\text{ V}$ )	$V_{CE} = 15\text{ V}$ $T_{amb} = 55\text{ °C}$			0.6	$\mu\text{A}$
$I_{EBO}$	Emitter Cutoff Current ( $I_C = 0$ )	$V_{EB} = 4.5\text{ V}$			10	$\mu\text{A}$
$I_{BEX}$	Base Cutoff Current ( $V_{BE} = -3\text{ V}$ )	$V_{CE} = 15\text{ V}$ $T_{amb} = 55\text{ °C}$			0.6	$\mu\text{A}$
$V_{CER(sus)}^*$	Collector-emitter Sustaining Voltage ( $R_{BE} = 10\ \Omega$ )	$I_C = 10\text{ mA}$	20			V
$V_{(BR)CEO}^*$	Collector-emitter Breakdown Voltage ( $I_B = 0$ )	$I_C = 10\text{ mA}$	15			V
$V_{CE(sat)}^*$	Collector-emitter Saturation Voltage	$I_C = 10\text{ mA}$ $I_B = 1\text{ mA}$			0.25	V
		$I_C = 100\text{ mA}$ $I_B = 10\text{ mA}$			0.6	V
		$I_C = 10\text{ mA}$ $I_B = 0.6\text{ mA}$ for <b>BSX20</b>			0.3	V
		$I_C = 10\text{ mA}$ $I_B = 0.3\text{ mA}$			0.3	V
$V_{BE}$	Base-emitter Voltage	$I_C = 30\ \mu\text{A}$ $V_{CE} = 20\text{ V}$ $T_{amb} = 100\text{ °C}$	0.35			V
$V_{BE(sat)}^*$	Base-emitter Saturation Voltage	$I_C = 10\text{ mA}$ $I_B = 1\text{ mA}$	0.7		0.85	V
		$I_C = 100\text{ mA}$ $I_B = 10\text{ mA}$			1.5	V
$h_{FE}^*$	DC Current Gain	for <b>BSX19</b>			60	
		$I_C = 10\text{ mA}$ $V_{CE} = 1\text{ V}$	20			
		$I_C = 100\text{ mA}$ $V_{CE} = 2\text{ V}$	10			
		$I_C = 10\text{ mA}$ $V_{CE} = 1\text{ V}$				
		$T_{amb} = -55\text{ °C}$	10			
		for <b>BSX20</b>				120
$I_C = 10\text{ mA}$ $V_{CE} = 1\text{ V}$	40					
$I_C = 100\text{ mA}$ $V_{CE} = 2\text{ V}$	20					
$I_C = 10\text{ mA}$ $V_{CE} = 1\text{ V}$						
$T_{amb} = -55\text{ °C}$	20					
$f_T$	Transition Frequency	$I_C = 10\text{ mA}$ $V_{CE} = 10\text{ V}$				MHz
		for <b>BSX19</b> for <b>BSX20</b>	400 500	500 600		MHz
$C_{EBO}$	Emitter–base Capacitance	$I_C = 0$ $V_{EB} = 1\text{ V}$			4.5	pF
$C_{BO}$	Collector–base Capacitance	$I_E = 0$ $V_{CB} = 5\text{ V}$			4	pF
$t_s^{**}$	Storage Time	$I_C = 10\text{ mA}$ $V_{CC} = 10\text{ V}$ $I_{B1} = -I_{B2} = 10\text{ mA}$				ns
		for <b>BSX19</b> for <b>BSX20</b>		5 6	10 13	ns

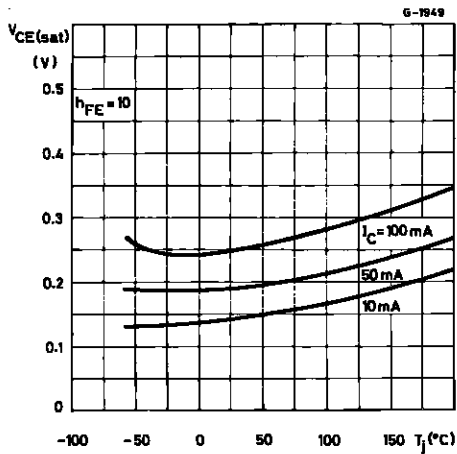
\* Pulsed : pulse duration = 300 $\mu\text{s}$ , duty cycle = 1%

\*\* See test circuit.

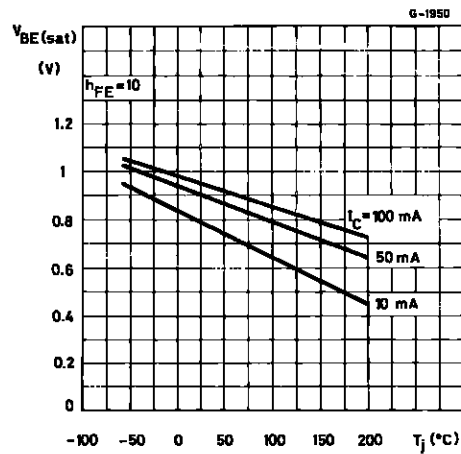
ELECTRICAL CHARACTERISTICS (continued)

Symbol	Parameter	Test Conditions	Min.	Typ.	Max.	Unit
$t_{on}$	Turn-on Time	$I_C = 10\text{ mA}$ $V_{CC} = 3\text{ V}$ $I_{B1} = 3\text{ mA}$			12	ns
		$I_C = 100\text{ mA}$ $V_{CC} = 6\text{ V}$ $I_{B1} = 40\text{ mA}$			7	ns
$t_{off}$	Turn-off Time	$I_C = 10\text{ mA}$ $V_{CC} = 3\text{ V}$ $I_{B1} = 3\text{ mA}$			15	ns
					18	ns
		$I_C = 100\text{ mA}$ $V_{CC} = 6\text{ V}$ $I_{B1} = 40\text{ mA}$			18	ns
					21	ns

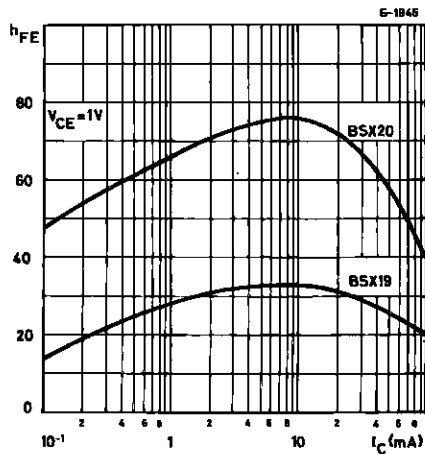
Collector-emitter Saturation Voltage.



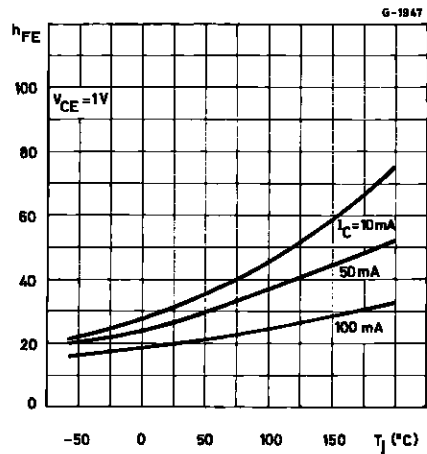
Base-emitter Saturation Voltage.



DC Current Gain.

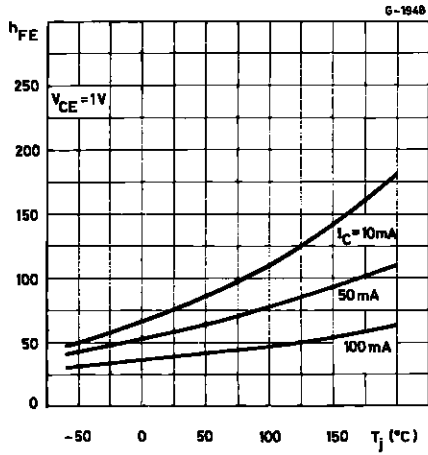


DC Current Gain (for BSX19 only).

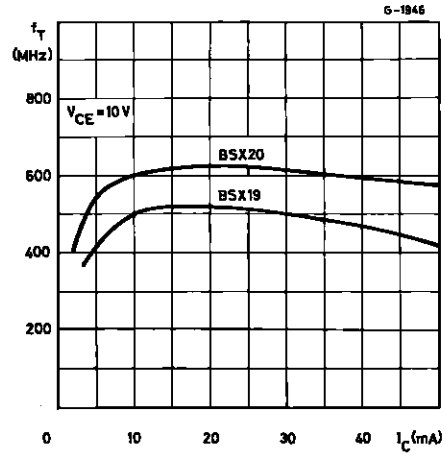


# BSX19-BSX20

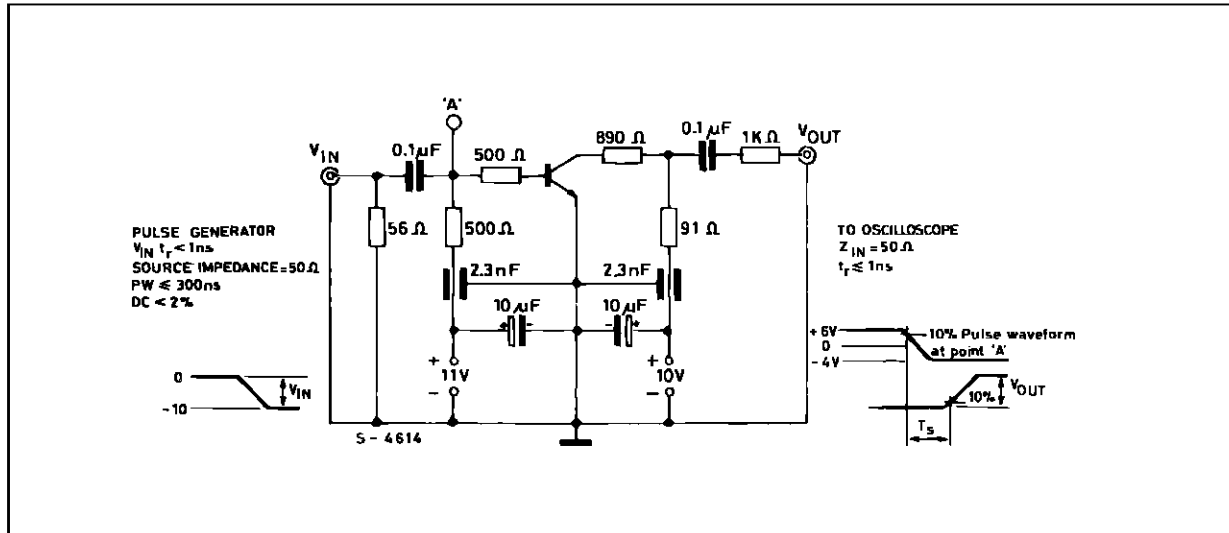
DC Current Gain (for BSX20 only).



Transition Frequency.

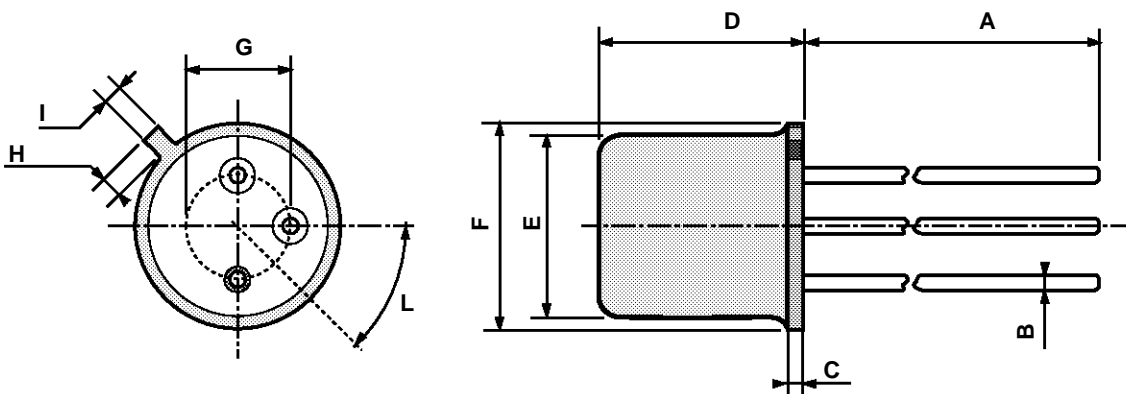


Test circuit for ts.



## TO-18 MECHANICAL DATA

DIM.	mm			inch		
	MIN.	TYP.	MAX.	MIN.	TYP.	MAX.
A		12.7			0.500	
B			0.49			0.019
D			5.3			0.208
E			4.9			0.193
F			5.8			0.228
G	2.54			0.100		
H			1.2			0.047
I			1.16			0.045
L	45°			45°		



0016043

Information furnished is believed to be accurate and reliable. However, SGS-THOMSON Microelectronics assumes no responsibility for the consequences of use of such information nor for any infringement of patents or other rights of third parties which may result from its use. No license is granted by implication or otherwise under any patent or patent rights of SGS-THOMSON Microelectronics. Specifications mentioned in this publication are subject to change without notice. This publication supersedes and replaces all information previously supplied. SGS-THOMSON Microelectronics products are not authorized for use as critical components in life support devices or systems without express written approval of SGS-THOMSON Microelectronics.

© 1994 SGS-THOMSON Microelectronics - All Rights Reserved

SGS-THOMSON Microelectronics GROUP OF COMPANIES

Australia - Brazil - France - Germany - Hong Kong - Italy - Japan - Korea - Malaysia - Malta - Morocco - The Netherlands -  
Singapore - Spain - Sweden - Switzerland - Taiwan - Thailand - United Kingdom - U.S.A